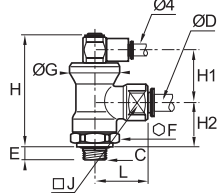


# Blocking Fittings

## 7880 Blocking Fitting, Male BSPP Thread



Nickel-plated brass, NBR

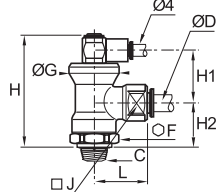


ØD	C		E	F	G	H	H1	H2	J	L	kg
6	G1/8	<a href="#">7880 06 10</a>	5.5	21	24	53	24.5	21	17	28	0.126
	G1/4	<a href="#">7880 06 13</a>	6.5	21	24	53	24.5	21	17	28	0.128
8	G1/4	<a href="#">7880 08 13</a>	6.5	21	24	53	24.5	21	17	28	0.122
	G3/8	<a href="#">7880 08 17</a>	7.5	21	24	53	24.5	21	17	28	0.127
10	G3/8	<a href="#">7880 10 17</a>	7.5	24	28	58	25	25	27	35	0.209
12	G1/2	<a href="#">7880 12 21</a>	9	24	28	58	25	25	27	37.5	0.222

## 7885 Blocking Fitting, Male BSPT Thread



Nickel-plated brass, NBR

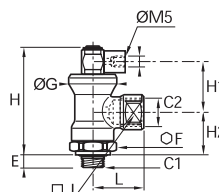


ØD	C		F	G	H	H1	H2	J	L	kg
6	R1/8	<a href="#">7885 06 10</a>	21	24	51.5	25	20	17	28	0.127
	R1/4	<a href="#">7885 06 13</a>	21	24	51.5	25	20	17	28	0.131
8	R1/4	<a href="#">7885 08 13</a>	21	24	51.5	25	20	17	28	0.126
	R3/8	<a href="#">7885 08 17</a>	21	24	51.5	25	20	17	28	0.130
10	R3/8	<a href="#">7885 10 17</a>	24	28	57	25	24	27	35	0.222
	R1/2	<a href="#">7885 12 21</a>	24	28	57	25	24	27	37.5	0.229

## 7881 Blocking Fitting, Male/Female BSPP Thread



Nickel-plated brass, NBR

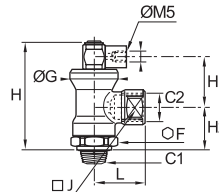


C1	C2		E	F	G	H	H1	H2	J	L	kg
G1/8	G1/4	<a href="#">7881 13 10</a>	5.5	21	24	53	24.5	21	17	25.5	0.118
G1/4	G1/4	<a href="#">7881 13 13</a>	6.5	21	24	53	24.5	21	17	25.5	0.119
G3/8	G3/8	<a href="#">7881 17 17</a>	7.5	24	28	58	25	25	27	34	0.211
G1/2	G1/2	<a href="#">7881 21 21</a>	9	24	28	58	25	25	27	40	0.226

## 7886 Blocking Fitting, Male/Female BSPT Thread



Nickel-plated brass, NBR

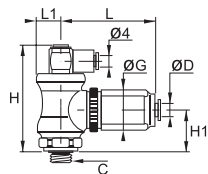


C1	C2		F	G	H	H1	H2	J	L	kg
R1/8	R1/4	<a href="#">7886 13 10</a>	21	24	51.5	25	20	17	26.5	0.121
R1/4	R1/4	<a href="#">7886 13 13</a>	21	24	51.5	25	20	17	26.5	0.126
R3/8	R3/8	<a href="#">7886 17 17</a>	24	28	57	25	24	27	34	0.225
R1/2	R1/2	<a href="#">7886 21 21</a>	24	28	57	25	24	27	40	0.240

## 7883 Blocker/Flow Regulator, Male BSPP Thread



Nickel-plated brass, technical polymer, NBR



ØD	C		G	H	H1	L	L <sub>max</sub>	L1	kg
4	G1/8	<a href="#">7883 04 10</a>	21.5	53	21	46.5	52	12	0.166
	G1/4	<a href="#">7883 06 10</a>	21.5	53	21	46.5	52	12	0.163
6	G1/4	<a href="#">7883 06 13</a>	21.5	53	21	46.5	52	12	0.166
	G1/4	<a href="#">7883 08 13</a>	27	57.5	24.5	54	60	14	0.251
8	G3/8	<a href="#">7883 08 17</a>	27	57.5	24.5	54	60	14	0.254

Combination of blocking and flow regulation functions  
Working temperature: 0 to +70°C