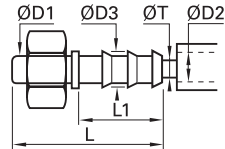


# Brass Adaptors

## 0122 Barb Connector for Hose



Brass

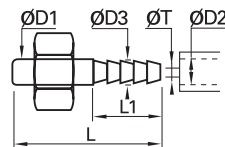


ØD1	ØD2		ØD3	L	L1	ØT min	kg
4	4	<a href="#">0122 04 04</a>	6	37.5	22.5	3	0.004
5	4	<a href="#">0122 05 04</a>	6	37.5	22.5	3	0.003
6	4	<a href="#">0122 06 04</a>	6	37.5	22.5	3	0.005
	7	<a href="#">0122 06 07</a>	9	37.5	22.5	6	0.007
8	6	<a href="#">0122 08 06</a>	8	40	22.5	5	0.007
	7	<a href="#">0122 08 07</a>	9	40	22.5	6	0.008
10	10	<a href="#">0122 08 10</a>	12.5	40	22.5	9	0.013
	7	<a href="#">0122 10 07</a>	9	43	22.5	6	0.010
10	10	<a href="#">0122 10 10</a>	12.5	43	22.5	9	0.014
	10	<a href="#">0122 12 10</a>	12.5	43	22.5	9	0.014
12	13	<a href="#">0122 12 13</a>	15	50	29.5	12	0.018
	13	<a href="#">0122 14 13</a>	15	52	29.5	12	0.019
14	16	<a href="#">0122 14 16</a>	18.5	60.5	38	15	0.308
	13	<a href="#">0122 15 13</a>	15	52	29.5	12	0.019
15	16	<a href="#">0122 15 16</a>	18.5	60.5	38	15	0.032
	13	<a href="#">0122 16 13</a>	15	53.5	29.5	12	0.021
16	16	<a href="#">0122 16 16</a>	18.5	62	38	15	0.032
	16	<a href="#">0122 18 16</a>	18.5	62	38	15	0.032
18	19	<a href="#">0122 18 19</a>	21.5	62	38	18	0.041
	16	<a href="#">0122 20 16</a>	18.5	64	38	15	0.034
20	19	<a href="#">0122 20 19</a>	21.5	64	38	18	0.038
	19	<a href="#">0122 22 19</a>	21.5	64	38	18	0.039
25	19	<a href="#">0122 25 19</a>	21.5	70	38	18	0.049
	25	<a href="#">0122 25 25</a>	27.5	70	38	24	0.054
28	25	<a href="#">0122 28 25</a>	27.5	70	38	24	0.087

## 0165 Barb Connector for Flexible Tubing



Brass



ØD1	ØD2		ØD3	L	L1	ØT min	kg
4	4	<a href="#">0165 04 06</a>	4.3	30	15	2	0.002
5	4	<a href="#">0165 05 06</a>	4.3	30	15	2	0.010
	4	<a href="#">0165 06 06</a>	4.3	30	15	2	0.003
6	6	<a href="#">0165 06 08</a>	6.4	30	15	4	0.004
	8	<a href="#">0165 06 10</a>	8.4	30	15	4	0.004
8	6	<a href="#">0165 08 08</a>	6.4	32.5	15	4	0.006
	8	<a href="#">0165 08 10</a>	8.4	32.5	15	6	0.006
10	10	<a href="#">0165 08 12</a>	10.7	37.5	20	8	0.009
	8	<a href="#">0165 10 10</a>	8.4	35.5	15	6	0.008
10	10	<a href="#">0165 10 12</a>	10.7	40.5	20	8	0.010
	12	<a href="#">0165 10 14</a>	12.7	40.5	20	8	0.012
12	10	<a href="#">0165 12 12</a>	10.7	40.5	20	8	0.011
	12	<a href="#">0165 12 14</a>	12.7	40.5	20	10	0.013
14	12	<a href="#">0165 14 14</a>	12.7	42.5	20	10	0.014
15	13	<a href="#">0165 15 16</a>	13.7	42.5	20	11	0.016
16	13	<a href="#">0165 16 16</a>	13.7	44	20	11	0.018

### Assembly: Barb Connectors

Our barb connectors 0122 and 0165 are designed to be used with different types of hose. They are secured using the nut and olive provided with the fitting.

