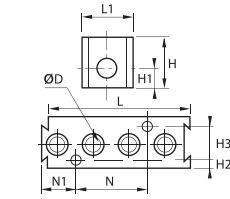


# Anodised Aluminium Manifolds

## 3301 Modular Manifold



Treated aluminium, NBR



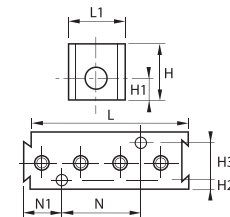
| ØD |  | Number of Outlets          | H  | H1 | H2  | H3 | L    | L1 | N  | N1 | kg    |
|----|--|----------------------------|----|----|-----|----|------|----|----|----|-------|
| 4  |  | <a href="#">3301 04 00</a> | 25 | 10 | 4.5 | 16 | 73.5 | 25 | 35 | 17 | 0.105 |
| 6  |  | <a href="#">3301 06 00</a> | 25 | 10 | 4.5 | 16 | 73.5 | 25 | 35 | 17 | 0.108 |

Fixing with screw M3x20

## 3301 Manifold, Female BSPP Thread



Treated aluminium, NBR



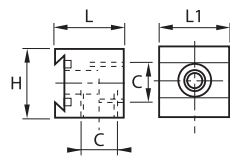
| C    |  | Number of Outlets          | H  | H1 | H2  | H3 | L    | L1 | N  | N1 | kg    |
|------|--|----------------------------|----|----|-----|----|------|----|----|----|-------|
| G1/8 |  | <a href="#">3301 07 10</a> | 25 | 10 | 4.5 | 16 | 73.5 | 25 | 35 | 17 | 0.097 |

Fixing with screw M3x20  
NPT available on request

## 3302 Single Manifold, Female BSPP Thread



Treated aluminium, NBR



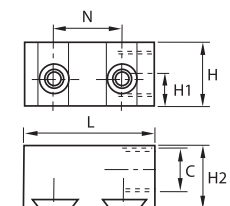
| C    |  |                               | H  | L    | L1 | kg    |
|------|--|-------------------------------|----|------|----|-------|
| G1/4 |  | <a href="#">3302 01 13</a>    | 25 | 24.5 | 25 | 0.030 |
|      |  | <a href="#">3302 01 13 01</a> | 25 | 24.5 | 25 | 0.031 |

3302 01 13: side entry thread  
3302 01 13 01: rear entry thread  
NPT available on request

## 3302 Double Manifold, Female BSPP Thread



Treated aluminium, NBR



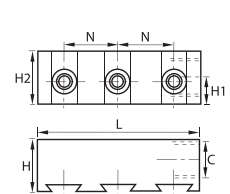
| C    |  |                            | H  | H1   | H2   | L  | N  | kg    |
|------|--|----------------------------|----|------|------|----|----|-------|
| G3/8 |  | <a href="#">3302 02 17</a> | 25 | 12.5 | 24.5 | 51 | 26 | 0.061 |

Side entry thread  
NPT available on request

## 3302 Triple Manifold, Female BSPP Thread



Treated aluminium, NBR



| C    |  |                            | H  | H1   | H2 | L  | N  | kg    |
|------|--|----------------------------|----|------|----|----|----|-------|
| G3/8 |  | <a href="#">3302 03 17</a> | 25 | 12.5 | 25 | 77 | 26 | 0.087 |

Side entry thread  
NPT available on request