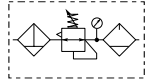
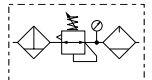


Popular Combinations - P32 Series



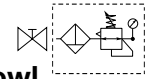
**Filter + Regulator + Lubricator Combinations + Poly bowl**  
**5 micron element, 8 bar Regulator + Gauge and Wall Mounting Brackets**  
**Inlet pressure 10 bar, Secondary pressure 6.3 bar, 1 bar pressure drop.**

Port size	Flow dm <sup>3</sup> /s (scfm)		Manual Drain	Weight	Auto Drain	Weight
1/4"	20	42	<b>P32CB12GEMNGLNW</b>	1.29 kg	<b>P32CB12GEANGLNW</b>	1.29 kg
3/8"	32	68	<b>P32CB13GEMNGLNW</b>	1.29 kg	<b>P32CB13GEANGLNW</b>	1.29 kg
1/2"	40	85	<b>P32CB14GEMNGLNW</b>	1.29 kg	<b>P32CB14GEANGLNW</b>	1.29 kg



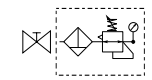
**Filter/Regulator + Lubricator Combinations + Poly bowl**  
**5 micron element, 8 bar Regulator + Gauge and Wall Mounting Brackets**  
**Inlet pressure 10 bar, Secondary pressure 6.3 bar, 1 bar pressure drop.**

Port size	Flow dm <sup>3</sup> /s (scfm)		Manual Drain	Weight	Auto Drain	Weight
1/4"	22	45	<b>P32CA12GEMNGLNW</b>	1.03 kg	<b>P32CA12GEANGLNW</b>	1.03 kg
3/8"	33	70	<b>P32CA13GEMNGLNW</b>	1.03 kg	<b>P32CA13GEANGLNW</b>	1.03 kg
1/2"	43	90	<b>P32CA14GEMNGLNW</b>	1.03 kg	<b>P32CA14GEANGLNW</b>	1.03 kg



**Slide Valve + Filter/Regulator + Lubricator Combinations + Poly bowl**  
**5 micron element, 8 bar Regulator + Gauge and Wall Mounting Brackets**  
**Inlet pressure 10 bar, Secondary pressure 6.3 bar, 1 bar pressure drop.**

Port size	Flow dm <sup>3</sup> /s (scfm)		Manual Drain	Weight	Auto Drain	Weight
1/4"	22	45	<b>P32YA12GEMNGLNW</b>	1.5 kg	<b>P32YA12GEANGLNW</b>	1.5 kg
3/8"	33	70	<b>P32YA13GEMNGLNW</b>	1.5 kg	<b>P32YA13GEANGLNW</b>	1.5 kg
1/2"	43	90	<b>P32YA14GEMNGLNW</b>	1.5 kg	<b>P32YA14GEANGLNW</b>	1.5 kg



**Slide Valve + Filter/Regulator Combinations + Poly bowl**  
**5 micron element, 8 bar Regulator + Gauge and Wall Mounting Brackets**  
**Inlet pressure 10 bar, Secondary pressure 6.3 bar, 1 bar pressure drop.**

Port size	Flow dm <sup>3</sup> /s (scfm)		Manual Drain	Weight	Auto Drain	Weight
1/4"	22	45	<b>P32YN12GEMNGW</b>	1.1 kg	<b>P32YN12GEANGW</b>	1.1 kg
3/8"	33	70	<b>P32YN13GEMNGW</b>	1.1 kg	<b>P32YN13GEANGW</b>	1.1 kg
1/2"	43	90	<b>P32YN14GEMNGW</b>	1.1 kg	<b>P32YN14GEANGW</b>	1.1 kg

<b>P 3 2</b>					<b>E</b>		<b>N</b>		<b>L N</b>	<b>W</b>
<b>Combination</b>		<b>Thread type</b>		<b>Port size</b>		<b>Drain type</b>		<b>Adjustment range</b>		Add only for options with Lubricator
Combination <b>C</b>		BSPP <b>1</b>		1/4 <b>2</b>		Auto drain <b>A</b>		<b>With round gauge</b>		
Shut off + Combination <sup>1</sup> <b>Y</b>		NPT <b>9</b>		3/8 <b>3</b>		Manual drain <b>M</b>		0-2 bar; 0-30 psi; 0.2 MPa <b>Z</b>		
				1/2 <b>4</b>				4 bar; 60 psi; 0.4 MPa <b>M</b>		
								8 bar; 125 psi; 0.8 MPa <b>G</b>		
								17 bar; 250 psi; 1.7 MPa <sup>Ⓞ</sup> <b>J</b>		
<b>Combination type</b>		<b>Bowl type</b>		<b>Note:</b> All bowl types are the same for each component						
F/R+L <b>A</b>		Poly bowl with bowl guard <b>G</b>		<b>Example:</b> If a "G" is specified for a F+L, both units would get a poly bowl with bowl guard.						
F+R+L <b>B</b>		Metal bowl with sight glass <b>S</b>		<sup>Ⓞ</sup> Only available with metal bowl option						
F/R <b>N</b>										

<sup>1</sup> Option not available with F+R+L