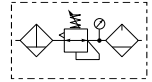
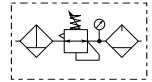


Popular Combinations - P33 Series



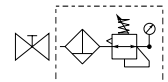
Filter + Regulator + Lubricator Combinations + Poly bowl
5 micron element, 8 bar Regulator + Gauge and Wall Mounting Brackets
Inlet pressure 10 bar, Secondary pressure 6.3 bar, 1 bar pressure drop.

Port size	Flow		Manual Drain	Weight	Auto Drain	Weight
	dm ³ /s	(scfm)				
1/2"	43	90	P33CB14GEMNGLNW	1.84 kg (4.06 lbs)	P33CB14GEANGLNW	1.84 kg (4.06 lbs)
3/4"	52	110	P33CB16GEMNGLNW	1.84 kg (4.06 lbs)	P33CB16GEANGLNW	1.84 kg (4.06 lbs)



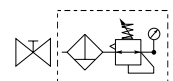
Filter/Regulator + Lubricator Combinations + Poly bowl
5 micron element, 8 bar Regulator + Gauge and Wall Mounting Brackets
Inlet pressure 10 bar, Secondary pressure 6.3 bar, 1 bar pressure drop.

Port size	Flow		Manual Drain	Weight	Auto Drain	Weight
	dm ³ /s	(scfm)				
1/2"	52	110	P33CA14GEMNGLNW	1.51 kg (3.33 lbs)	P33CA14GEANGLNW	1.51 kg (3.33 lbs)
3/4"	71	150	P33CA16GEMNGLNW	1.51 kg (3.33 lbs)	P33CA16GEANGLNW	1.51 kg (3.33 lbs)



Slide Valve + Filter/Regulator + Lubricator Combinations + Poly bowl
5 micron element, 8 bar Regulator + Gauge and Wall Mounting Brackets
Inlet pressure 10 bar, Secondary pressure 6.3 bar, 1 bar pressure drop.

Port size	Flow		Manual Drain	Weight	Auto Drain	Weight
	dm ³ /s	(scfm)				
1/2"	52	110	P33YA14GEMNGLNW	2.35 kg (5.2 lbs)	P33YA14GEANGLNW	2.35 kg (5.2 lbs)
3/4"	71	150	P33YA16GEMNGLNW	2.35 kg (5.2 lbs)	P33YA16GEANGLNW	2.35 kg (5.2 lbs)



Slide Valve + Filter/Regulator Combinations + Poly bowl
5 micron element, 8 bar Regulator + Gauge and Wall Mounting Brackets
Inlet pressure 10 bar, Secondary pressure 6.3 bar, 1 bar pressure drop.

Port size	Flow		Manual Drain	Weight	Auto Drain	Weight
	dm ³ /s	(scfm)				
1/2"	52	110	P33YN14GEMNGW	1.7 kg (3.75 lbs)	P33YN14GEANGW	1.7 kg (3.75 lbs)
3/4"	71	150	P33YN16GEMNGW	1.7 kg (3.75 lbs)	P33YN16GEANGW	1.7 kg (3.75 lbs)

P 3 3					E		N		LN	W
Combination	Thread type		Port size		Drain type		Adjustment range		Add only for options with Lubricator	
Combination	BSPP	1	1/2	4	Auto drain	A	With round gauge			
Shut off + Combination ¹	NPT	9	3/4	6	Manual drain	M	0-2 bar; 0-30 psi; 0.2 MPa		Z	
							4 bar; 60 psi; 0.4 MPa		M	
							8 bar; 125 psi; 0.8 MPa		G	
							17 bar; 250 psi; 1.7 MPa [Ⓞ]		J	
¹ Option not available with F+R+L	Combination type		Bowl type		Note: All bowl types are the same for each component					
	F/R+L	A	Poly bowl with bowl guard		Example: If a "G" is specified for a F+L, both units would get a poly bowl with bowl guard.					
	F+R+L	B	Metal bowl with sight glass		[Ⓞ] Only available with metal bowl option					
	F/R	N								